

BOXmanufaktur



USA

**Composite
FRP &
Aluminum
Boxes**

„We are your reliable partner
for custom composite boxes
in outstanding quality“



Andreas Bruckner & Hajo Willenbrock

BoXmanufaktur Specialist for Custom FRP & Aluminum Boxes

BoXmanufaktur has over 100 years of special vehicle manufacturing in its DNA and the overland travel virus in its blood. Since 40 years BoXmanufaktur has been making overlanding dreams come true.

Hajo Willenbrock (Dipl. Ing. FH, vehicle construction engineer) and **Andreas Bruckner** (business economist tourism and globetrotter) are the driving forces behind a team of over 40 employees.

The travel experiences with a family of 5 in a MAN TGA 6x6 and several years of travel in the Middle East and the USA also flow into the production of our BoXmanufaktur composite boxes, as well as the know how in special vehicle construction.



Ready for Adventure?



BoXmanufaktur Composite Boxes

Each BoXmanufaktur Composite RV Box is custom-made to meet your requirements and fit your base vehicle. We manufacture the sandwich panels for our cabins in-house using our vacuum and hydraulic presses. This enables us to laminate FRP profiles for BoXmanufaktur hatches and doors.

Integrated aluminum reinforcements in the floor allow for connection to the subframe and easy installation of storage boxes underneath the vehicle. Reinforcements for rear carriers, awnings, or seating systems with seat belts are also considered during the pressing of the BoXmanufaktur sandwich panels.

Our Boxes are designed to be completely free of thermal bridges and, thanks to the 100% wood-free and moisture-resistant sandwich panels, are particularly durable and resilient.

To enhance torsional stiffness, we recommend constructing some interior walls and furniture components from sandwich panels as well. We can also plan and manufacture the subframe upon request.

Custom-made underfloor storage boxes made of stainless steel, roof racks, and rear lift solutions complete the vehicle's overall design and provide additional storage space.

BoXmanufaktur Box Types

All BoXmanufaktur boxes have been developed for off-road use and are therefore perfectly suited as a living habitat for expedition vehicles, 4x4's, overland and off-road vehicles of all sizes.

Vehicles over 15000 lbs:

- Steward & Stevenson: lmtv, M1086, M1078
- Acela: Monterra 4x4 & 6x6, Straya 4x4
- Ford: F450, F550, F600
- Dodge: Ram 4500, Ram 5500
- Mercedes-Benz: NG, SK, Unimog



Vehicles up to 15000 lbs:

- Mercedes-Benz: Sprinter, Unimog U1300
- Ford: F350, F450, Transit
- And many more

Pick-up trucks & 4x4:

- Mercedes-Benz G
- Ford F 150
- Toyota: Land Cruiser, Hilux
- Land Rover Defender 130
- And many more



Pure-Line BoX

The new Pure-Line Box from Boxmanufaktur offers you the proven quality of Boxmanufaktur with a well-thought-out basic configuration and impressively short delivery times. To ensure this exceptionally fast delivery, the Pure-Line Box is only available in the described configuration with the offered options.

Pure-Line Box Basic Features:

- Wall thickness: 57-59 mm
- FRP (fiber-reinforced plastic) top layer inside and outside
- Cold-bridge-free floor structure – 90 mm foam core
- Cold-bridge-free walls and roof – 55 mm foam core
- Integrated aluminum reinforcements in the floor for connection to the subframe
- 4 mm thick aluminum corner profiles + 45° angled corner brackets
- 2 mm thick aluminum corner profiles inside the cabin
- Pre-cut for a door or storage compartment hatch

Pure Line Box Options:

- Length up to 6200 mm • Width up to 2550 mm • Height up to 2500 mm
- FRP top layer: 1 mm or 2 mm
- Front or rear slope | 45°
- Preparation for underfloor heating
- Aluminum strips in walls and ceiling for easy and secure furniture installation



Proven Boxmanufaktur Quality Without Compromise



Just 12 weeks delivery time after design approval



Individual BoX

In the world of expedition vehicles and composite boxes, the Individual Box sets new standards.

Here, customization is taken to the next level: you determine the shape, dimensions, wall thicknesses, top layers, and much more.

Whether compact or spacious, minimalist or luxurious, with or without a cabover – the choice is entirely yours.

The Individual Box offers you the flexibility to create exactly the cabin that suits your needs and travel habits. There's no greater level of individuality.

Light Box

With a wall thickness starting at 42 mm, the Light Box offers an excellent balance between weight and stability. The use of ultra-lightweight FRP top layers ensures that your composite box remains resilient and durable without adding unnecessary weight.

This makes the Light Box the perfect solution for expedition vehicles based on models like the Mercedes-Benz Sprinter, Iveco Daily, Unimog U 1300, or MAN TGE.

Additionally, off-road vehicles and pickups such as the Mercedes-Benz G-Class or Ford Ranger can also be equipped with a custom Light Box.

But that's not all: like all our composite boxes, the Light Box is individually crafted to your specifications and precisely tailored to your base vehicle. This means you won't receive a generic product, but rather a custom composite box that perfectly meets your needs.

So, the Light Box is more than just a lightweight option. It is a custom-built heavyweight in terms of quality, versatility, and stability.



BoXmanufaktur Boxes Overview	Pure-Line Box	Individual Box	Light Box
Length Width Height	Up to 6200 x 2550 x 2500 mm	Selectable	Selectable
Door cutout in the desired dimension	1 x Cut out for door or hatch	X	X
BoXmanufaktur doors & hatches in the desired dimensions	X	✓	✓
Alcove/ cab over, rear slope, front slope	1 x Front or rear slope 45°	✓	✓
Wall thickness	✓	57 – 61 mm	42 – 57 mm
Aluminum-reinforced, cold bridge-free floor unit	✓	66 – 97 mm	66 mm
FRP external & internal top layer	1 or 2 mm	1 – 3 mm	1 mm
1.2 mm external aluminum top layer and 2 mm internal FRP top layer	X	Optional	X
4 mm thick, circumferential aluminum corner profile 45° beveled	✓	✓	X
2.5 mm thick, circumferential aluminum corner profile 45° beveled	X	X	✓
4 mm thick aluminum corner caps 45° beveled	✓	✓	X
2.5 mm thick aluminum corner caps 45° beveled	X	X	✓
2 mm thick, circumferential aluminum corner profile in the box	✓	✓	Optional



A grey BoXmanufaktur truck camper is shown from a rear three-quarter view. The camper has a spare tire mounted on the back, a large LED light bar, and several windows. The truck is parked on a paved road, and the background features a sunset over a field with bare trees.

BoXmanufaktur Details & Options

Here at BoXmanufaktur the love to detail, combined with uncompromised craftsmanship makes the difference and allows us to manufacture world class products.



FRP & Aluminum Laminates

For the construction of your Boxmanufaktur composite box, we exclusively use custom-made sandwich panels produced in-house. This approach provides us with virtually unlimited options to meet your specific needs and requirements.

Depending on your desired weight and durability, we offer a range of fiberglass laminates—from ultra-thin and lightweight to extra-strong—as well as 1.2 mm aluminum.



Inlays & Reinforcements

Reinforcements can be seamlessly integrated behind the laminates, ensuring easy and secure installation of furniture, awnings, and airline rails.

Additionally, integrated reinforcement frames in the rear wall panel facilitate the straightforward mounting of bicycle racks and lightweight spare wheel carriers.

For added comfort, hydronic floor heating pipes can be optionally integrated into the floor panel

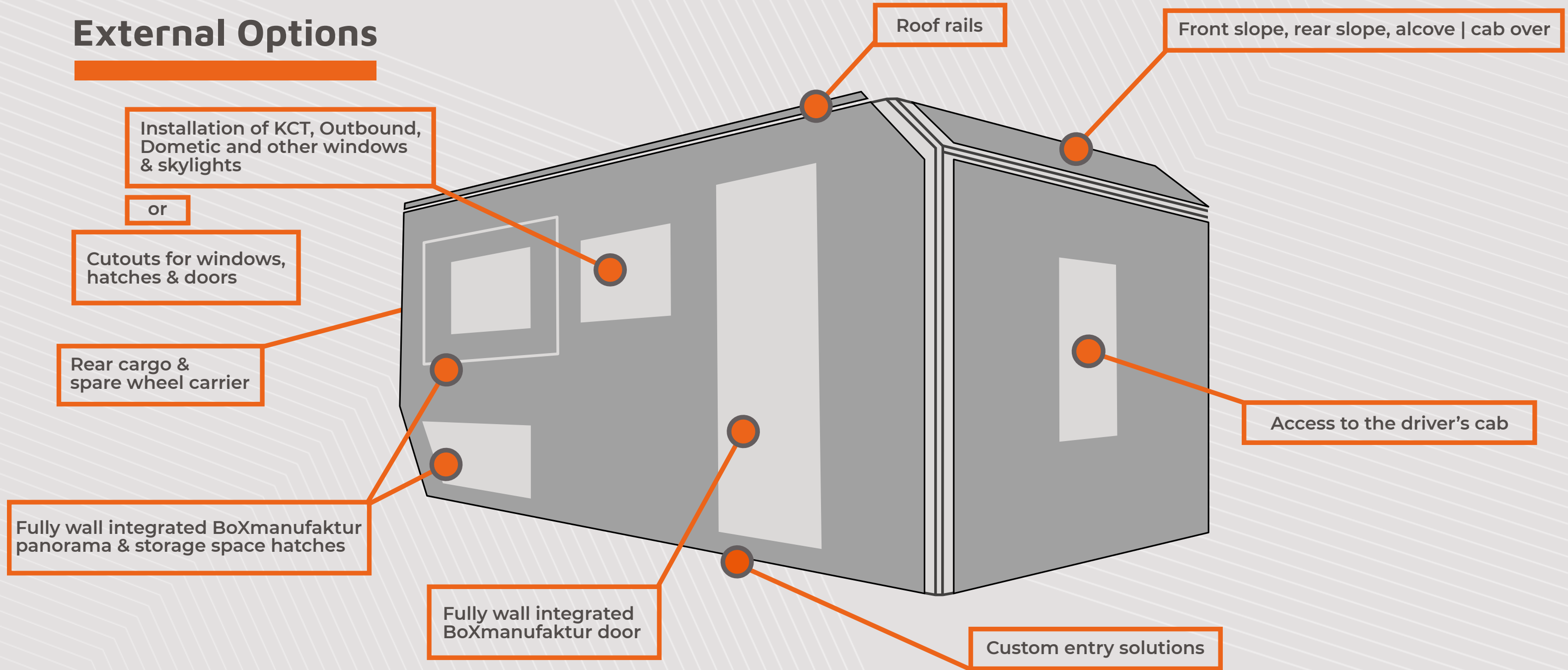
Ultra Rugged

The completely cold bridge free construction, uses complex nested corner joints with maximum adhesive surface to ensure the market leading stability of BoXmanufaktur living habitats.

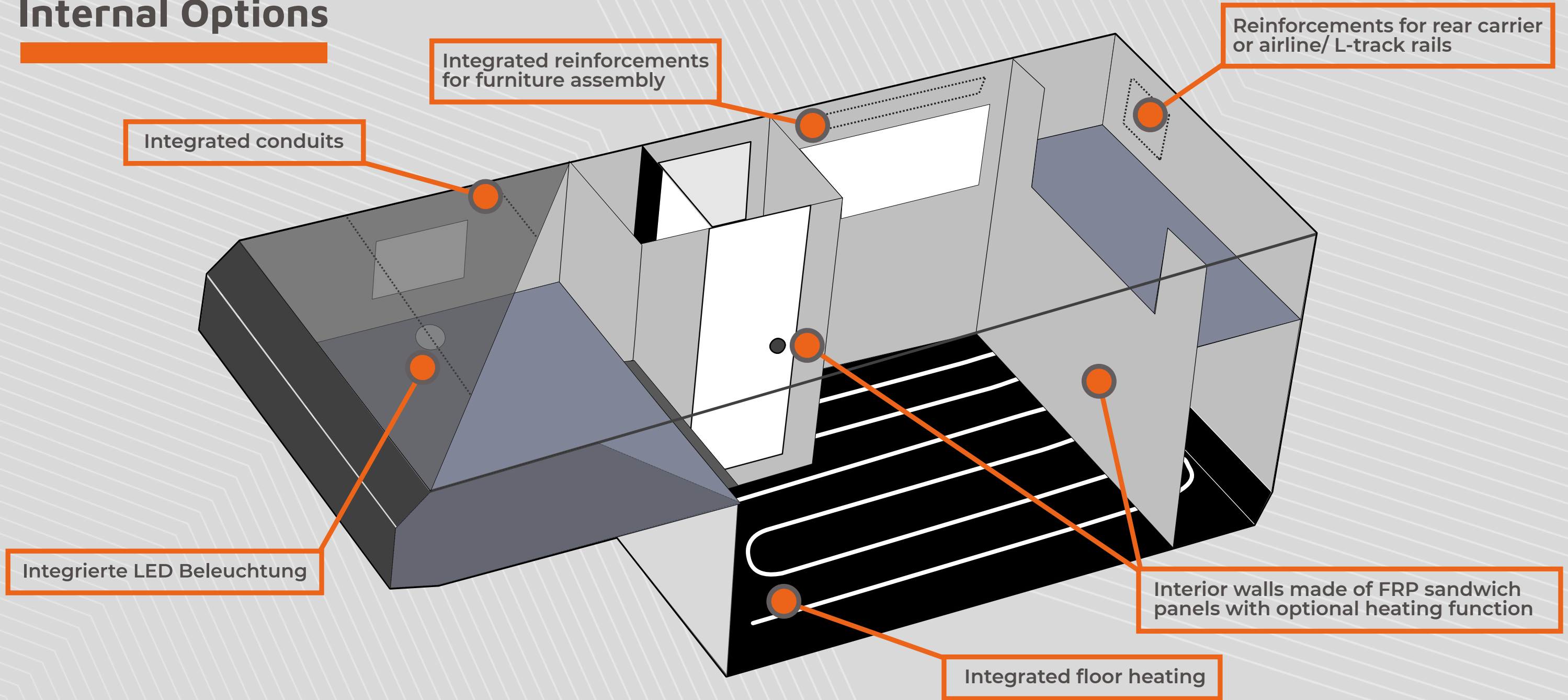
Strong 4 mm, 45° beveled aluminum extrusion profiles and additional corner caps, enclose the box all around to protect against branches, brushwood and other obstacles.



External Options



Internal Options





BoXmanufaktur Doors & Hatches

Our doors and hatches are made of FRP extrusion profiles, integrated in the walls during of the sandwich panel production.

That ensures perfect insulation and stiffness, as well as custom sizes. The doors and hatches have no visible frame and blend in perfectly with the box design.

Strong, oversized stainless steel piano hinges and 3-point locks, guarantee maximum safety.



Perfect Connection

For secure cabin mounting on the subframe, the BoXmanufaktur floor assembly is designed without thermal bridges and features integrated aluminum profiles.

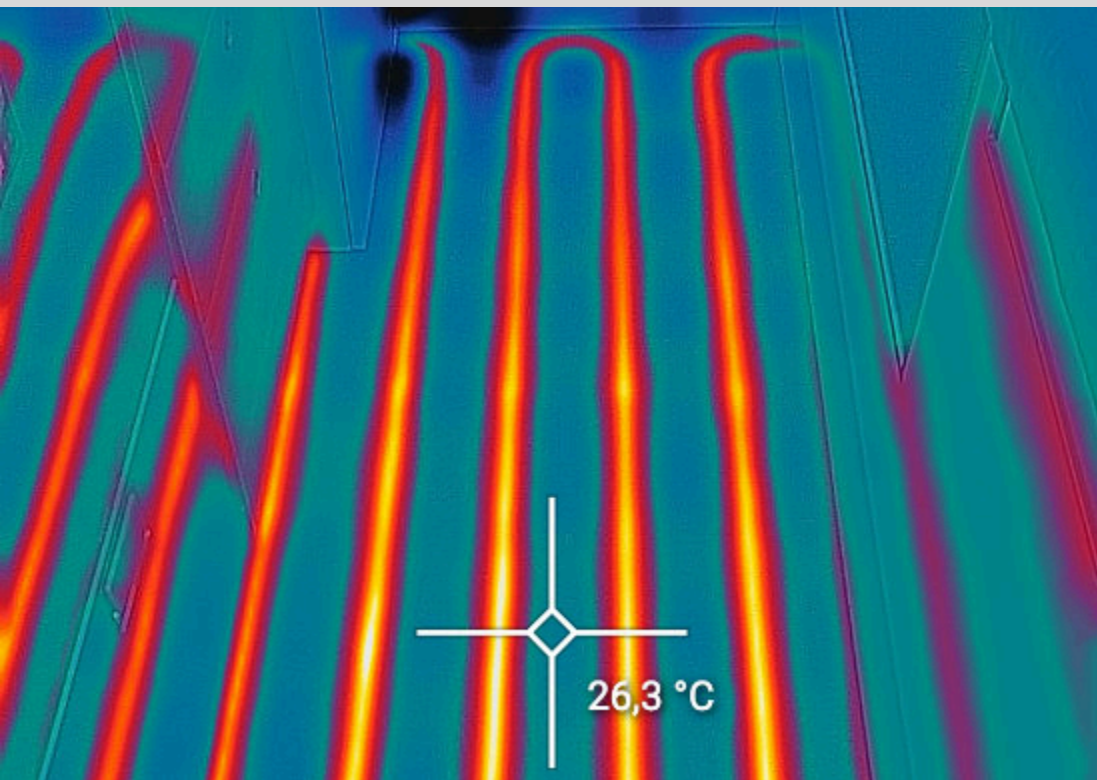
Our subframes eliminate the need for bulky cross beams or cantilevers, allowing storage boxes to be mounted directly to the underside of the living habitat. This not only improves aesthetics but also avoids the need for complex custom brackets.

Alternatively, the subframe can be fully integrated into the floor assembly

Floor, Wall, & Bed Box Heating

Our water-based underfloor heating, integrated into the floor structure, ensures even and comfortable warmth throughout the entire interior. It provides comfort on cold days and creates a pleasant living environment.

For added convenience, optional heating loops can be integrated into the bathroom or shower wall, as well as the bed base, to prevent moisture buildup under the mattress. These well-designed solutions turn your vehicle into a true haven of comfort, no matter the outside temperature.



Composite Interior Walls, Subfloor & Furniture Components

Upon your wish, we can also equip your box with subfloors and interior walls made of FRP sandwich panels.

These not only provide additional stiffening of the box, but due to their moisture resistance they are also ideal for separating the bathroom & shower from the living area.

Very popular is also a garage partition and bed platform, as well as custom seating and dinette solutions.

Windows & Skylights

For your Boxmanufaktur composite RV box, we use high-quality double-glazed windows and skylights from KCT, Outbound, and other manufacturers. For our weight-optimized boxes, we also offer acrylic windows from Dometic.

Prefer to install the windows yourself?

No worries. We will precisely cut the required openings in the box walls to your specifications and provide the desired windows, roof hatches, and access panels along with your order.



Entry Solutions

As diverse as our composite boxes are, so are our customized entry solutions.

Our offerings include, among other things, step ladders, various combinations of platforms and ladders, as well as electrically folding and retractable stairs or box stairs.

The low-entry or coupe entry provides a lower entry edge by incorporating additional steps inside the box. This typically allows access to the living habitat without the need to attach or extend a platform or ladder.

A particularly practical and elegant solution is our integrated ladder, which is space-savingly built into the custom-designed subframe we developed.

This solution combines maximum functionality with appealing design while providing a comfortable and safe entry.



Roof Rails

Our aluminum roof railing not only provides reliable protection for your expedition vehicle but also stands out with its sleek design.

Reinforced with hand-welded aluminum corner caps, it protects the box, roof edges, as well as installed solar panels and other sensitive components from branches and obstacles.



Spare Wheel Carrier

For optimum load distribution when mounting spare wheel carriers or bicycle racks on the rear wall of your box, we integrate a reinforcing aluminum frame into the rear wall without cold bridges.

We manufacture the suitable spare wheel carrier individually according to your requirements.

Roof Rack

Our custom-made roof racks offer the perfect solution for any adventure. Whether made from durable steel or lightweight aluminum, we design and manufacture each roof rack individually to fit your vehicle and intended use.

From securely storing your gear to increasing load capacity, our roof racks represent the highest quality and reliability on any terrain.





Subframe

All boxes require a customized subframe to decouple the torsion forces of the truck frame and to avoid damages to the living habitat.

In most cases, the frame of a truck is designed to be able to twist, our subframe is made of rigid steel beams, with cross members in the front and rear. The subframe is mounted with feather springs and bolts to the truck chassis.

Additional fixed brackets in the rear and “guide fingers” in the front, make sure the box can safely lift off and return on the truck frame.

We believe that this is the best compromise for on road driving safety and off-road performance.

Some chassis require different solutions like 4-point/diamond shape subframes – we can also offer custom solutions for those chassis.

Box Installation & Twist Test

Your Boxmanufaktur box is ready and will now be mounted on the chassis. Before we hand over the vehicle to you, we carry out a final test to ensure that everything fits and the subframe sufficiently decouples the box from the chassis.





The Handover

The handover of an expedition vehicle or a composite box is always a special moment for us as a manufacturer. It brings us great joy to see the beaming smiles of our customers as they receive their new adventure vehicle for the first time.

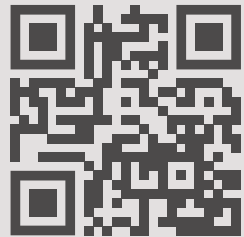
This moment is not only a highlight for the new owners—it's also a testament to our team's hard work and passion that goes into every empty cabin and expedition vehicle we build.

Equipment & Interior

From empty box to Expedition Vehicle

We turn your box and your selected chassis into an expedition vehicle that is, ready to travel – individually designed, self-sufficient and safe!

For more information about travel-ready Boxmanufaktur expedition vehicles, scan the QR code below:



Any questions?
Then get in touch with our Partner RRE-Global today at

+1 725 205 0101

to arrange your personal appointment.



BOXmanufaktur



Our US Partner:
RRE-Global LLC
Henderson, NV
USA

+1 725 205 0101
info@rre-global.com
www.rre-global.com

BoXmanufaktur UG
Bremerstr. 24-26
27367 Sottrum
Germany

+49 4264. 83 67 720
sales@boxmanufaktur.com
www.boxmanufaktur.com

SCAN ME

